



Designed for lightweight woven fabrics.

Suggested Fabrics: Cotton, cotton types, calicos, chambray, linen, challis, rayon & blends.

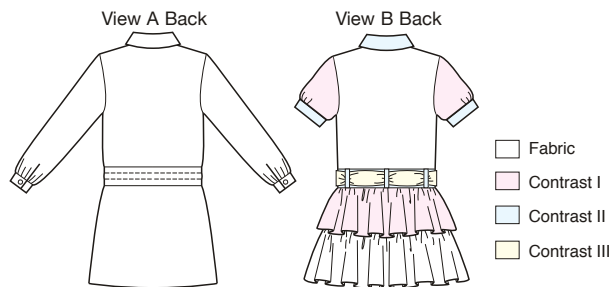


**3832**

**GIRLS' DROPPED WAIST SHIRT DRESSES**  
XS(4-5) - S(6) - M(7-8) - L(10) - XL(12-14)

Shirt dresses have collar, dropped waist with inset, sleeves gathered to cuffs, and front button closure. View A has full length sleeves, breast patch pocket, pockets on front skirt, and casing with drawstring on inset. View B is made from four different color fabrics, has short sleeves, breast patch pockets, two-ruffle skirt, belt loops on inset, and sash.

Pattern includes 5/8" (1.5 cm) seam allowances.



Size	XS(4-5)	S(6)	M(7-8)	L(10)	XL(12-14)	
<b>Finished Length at Center Back</b>						" (cm)
View A & B	21 (54)	23 (59)	25 (64)	27 1/2 (70)	30 (76)	
<b>Material Required:</b> Fabric requirement allows for nap, one-way design or shading. Extra fabric may be needed to match design or for shrinkage.						
<b>Fabric 60" (152 cm) Wide</b>						
View A	1 5/8 (1.50)	1 3/4 (1.60)	1 7/8 (1.75)	2 (1.85)	2 1/8 (1.95)	yd (m)
View B Fabric	1 (0.95)	1 (0.95)	1 (0.95)	1 1/8 (1.05)	1 1/4 (1.15)	yd (m)
View B Contrast I	3/8 (0.35)	1/2 (0.50)	1/2 (0.50)	1/2 (0.50)	1/2 (0.50)	yd (m)
View B Contrast II	1/2 (0.50)	5/8 (0.60)	5/8 (0.60)	5/8 (0.60)	5/8 (0.60)	yd (m)
View B Contrast III	1/4 (0.25)	1/4 (0.25)	1/4 (0.25)	3/8 (0.35)	3/8 (0.35)	yd (m)
<b>Fabric 45" (115 cm) Wide</b>						
View A	2 1/8 (1.95)	2 1/4 (2.10)	2 3/8 (2.20)	2 1/2 (2.30)	2 3/4 (2.55)	yd (m)
View B Fabric	1 (0.95)	1 (0.95)	1 (0.95)	1 3/8 (1.30)	1 3/8 (1.30)	yd (m)
View B Contrast I	1/2 (0.50)	1/2 (0.50)	1/2 (0.50)	3/4 (0.70)	3/4 (0.70)	yd (m)
View B Contrast II	5/8 (0.60)	5/8 (0.60)	5/8 (0.60)	5/8 (0.60)	5/8 (0.60)	yd (m)
View B Contrast III	3/8 (0.35)	3/8 (0.35)	3/8 (0.35)	3/8 (0.35)	3/8 (0.35)	yd (m)
<b>Notions:</b> Thread. <b>View A:</b> Six 1/2" (12 mm) buttons, drawstring for waist. <b>View B:</b> Four 1/2" (12 mm) buttons.						