

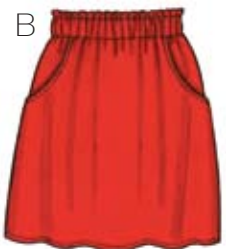


price **3830**

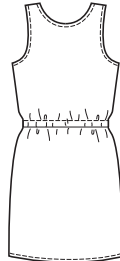
MISSSES' JUMPER & SKIRT
XS-S-M-L-XL

Designed for light to medium weight woven fabrics.
Suggested Fabrics: Cotton types, challis, linen, light denim, rayon & blends.

Pull-on skirt and pull-over jumper have tucks on front and side pockets. View A has slightly dropped waist with elastic in casing, scoop neckline, and neckline and armholes are finished with bias cut bindings. View B has wide elastic in casing with header forming ruffled top edge. Pattern includes 5/8" (1.5 cm) seam allowances.



View A Back



View B Back



Size	XS	S	M	L	XL	
Finished Length of Skirt from Waist Seam — Skirt sits below waist			View A 19" (48 cm)—All Sizes	View B 17" (43 cm)—All Sizes		
Material Required: Fabric requirement allows for nap, one-way design or shading. Extra fabric may be needed to match design or for shrinkage.						
Fabric 60" (152 cm) Wide						
View A	2 1/4 (2.10)	2 1/4 (2.10)	2 3/8 (2.20)	2 3/8 (2.20)	2 1/2 (2.30)	yd (m)
View B	1 1/4 (1.15)	1 1/4 (1.15)	1 1/4 (1.15)	1 3/8 (1.30)	1 3/8 (1.30)	yd (m)
Fabric 45" (115 cm) Wide						
View A	2 7/8 (2.65)	3 (2.75)	3 (2.75)	3 1/8 (2.85)	3 1/8 (2.85)	yd (m)
View B	1 5/8 (1.50)	1 5/8 (1.50)	1 5/8 (1.50)	1 5/8 (1.50)	1 5/8 (1.50)	yd (m)
Fusible Interfacing 22" (56 cm) Wide						
View A or B	1/4 (0.25)	1/4 (0.25)	1/4 (0.25)	1/4 (0.25)	1/4 (0.25)	yd (m)
Notions: Thread. View A: 3/4" (2 cm) wide elastic—1 yd (0.95 m) for XS-S-M-L; 1 1/8 yd (1 m) for XL.						
View B: 1 1/2" (4 cm) wide elastic—1 yd (0.95 m) for XS-S-M-L; 1 1/8 yd (1 m) for XL.						