



price **3782**

MISSES' TOPS
XS-S-M-L-XL

Designed for lightweight woven fabrics.

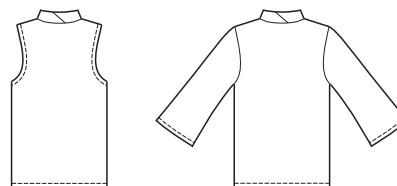
Suggested Fabrics: Silk, silk types, charmeuse, batiste, challis, lawn, georgette, rayon & blends.

Pull-over tops have bias cut stand up collar with ties, that thread through casing at center front and when pulled gathers the front. View A has three-quarter length flared sleeves. View B sleeveless top has armholes finished with bias cut bindings. Pattern includes 1/4" (6 mm) seam allowances.



View A Back

View B Back



Size	XS	S	M	L	XL	
Finished Length at Center Back						
View A & B	23 (59)	24 (61)	25 (64)	26 (66)	27 (69)	" (cm)
Material Required: Fabric requirement allows for nap, one-way design or shading. Extra fabric may be needed to match design or for shrinkage.						
Fabric 60" (152 cm) Wide						
View A	1 5/8 (1.50)	1 3/4 (1.60)	1 7/8 (1.75)	1 7/8 (1.75)	2 (1.85)	yd (m)
View B	1 1/2 (1.40)	1 1/2 (1.40)	1 5/8 (1.50)	1 5/8 (1.50)	1 3/4 (1.60)	yd (m)
Fabric 45" (115 cm) Wide						
View A	2 1/8 (1.95)	2 1/8 (1.95)	2 1/8 (1.95)	2 3/4 (2.55)	2 7/8 (2.65)	yd (m)
View B	1 1/2 (1.40)	2 1/8 (1.95)	2 1/8 (1.95)	2 1/4 (2.10)	2 3/8 (2.20)	yd (m)
Notions: Thread.						