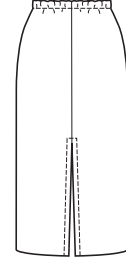
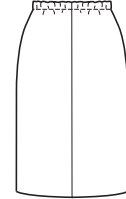




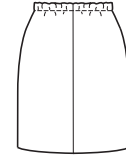
View A Back



View B Back

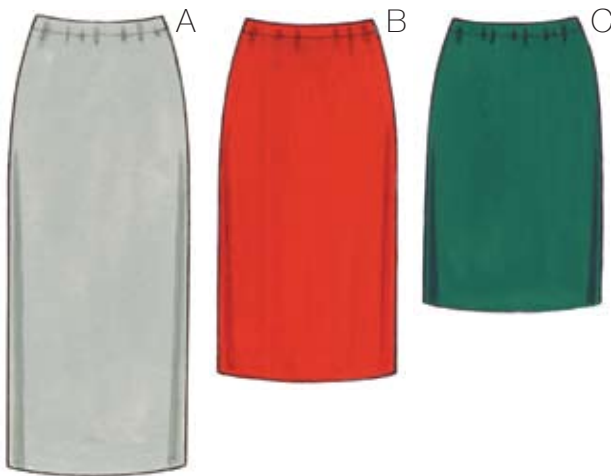


View C Back



price **3765**

**MISSES' SKIRTS**  
XS-S-M-L-XL



**Designed for firm knit & woven fabrics**

Suggested Fabrics: Double knit, jersey, cotton, cotton types, linen, challis, crepe.

Straight pull-on skirts in three lengths have side seams, center back seam, and elastic in casing at waist. View A has a high slit in center back seam. Skirts are very easy to make and have special easy-to-follow sewing instructions. Pattern includes 5/8" (1.5 cm) seam allowances.

Finished Length	View A 34" (86 cm) — All Sizes	View B 26" (66 cm) — All Sizes	View C 20" (51 cm) — All Sizes			
Size	XS	S	M	L	XL	
<b>Material Required:</b> Fabric requirement allows for nap, one-way design or shading. Extra fabric may be needed to match design or for shrinkage.						
<b>Fabric 60" (152 cm) Wide</b>						
View A	1 1/8 (1.05)	1 1/8 (1.05)	1 1/8 (1.05)	1 1/8 (1.05)	1 1/8 (1.05)	yd (m)
View B	7/8 (0.80)	7/8 (0.80)	7/8 (0.80)	7/8 (0.80)	7/8 (0.80)	yd (m)
View C	3/4 (0.70)	3/4 (0.70)	3/4 (0.70)	3/4 (0.70)	3/4 (0.70)	yd (m)
<b>Fabric 45" (115 cm) Wide</b>						
View A	1 1/8 (1.05)	1 1/8 (1.05)	2 1/4 (2.10)	2 1/4 (2.10)	2 1/4 (2.10)	yd (m)
View B	7/8 (0.80)	7/8 (0.80)	1 3/4 (1.60)	1 3/4 (1.60)	1 3/4 (1.60)	yd (m)
View C	3/4 (0.70)	3/4 (0.70)	1 1/2 (1.40)	1 1/2 (1.40)	1 1/2 (1.40)	yd (m)
<b>Notions:</b> Thread, 1 yd (0.95 m) of 1" (2.5 cm) wide elastic.						