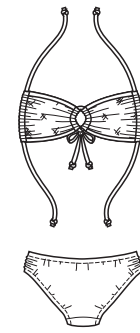
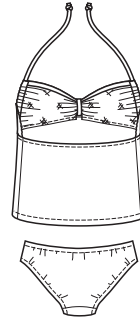




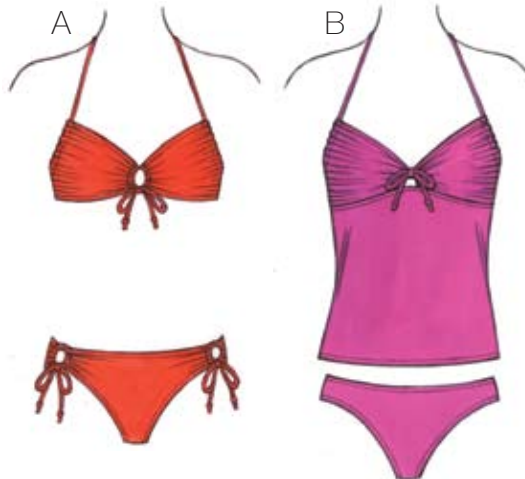
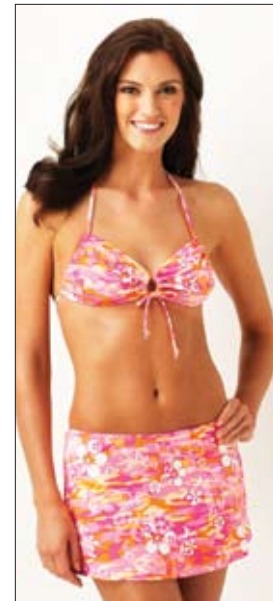
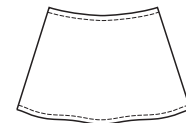
View A Back



View B Back



Skirt



price **3696**

MISSES' SWIMWEAR
XS-S-M-L-XL

Designed for two-way stretch fabrics with 75% stretch and greatest degree of stretch on lengthwise grain.
Suggested Fabrics: Swimwear fabric with Spandex Lycra®.

View A bikini has lined bra with ties in casings, gathering cups at armhole edges and center front. Bra ties at center back and at back neck. Panty has front lining, elastic at waist and leg openings, and ties in casings at sides. View B tankini has lined cups, ties in casings at armhole edges, gathering cups, and tie at center front. Top ties at back neck. Panty has front lining, and elastic at waist and leg openings. Skirt has elastic at waist and fits at high hip.

| Size | XS | S | M | L | XL | " (cm) |
|---|------------|--------------|--------------|--------------|--------------|--------|
| Finished Length of Skirt | 10 (25) | 10 1/2 (27) | 11 (28) | 11 1/2 (29) | 12 (31) | |
| Material Required: Fabric requirement allows for nap, one-way design or shading. Extra fabric may be needed to match design or for shrinkage. | | | | | | |
| Fabric 60" (152 cm) Wide | | | | | | |
| View A | 5/8 (0.60) | 3/4 (0.70) | 3/4 (0.70) | 3/4 (0.70) | 7/8 (0.80) | yd (m) |
| View B | 5/8 (0.60) | 5/8 (0.60) | 5/8 (0.60) | 1 (0.95) | 1 1/8 (1.05) | yd (m) |
| Fabric 45" (115 cm) Wide | | | | | | |
| View A | 5/8 (0.60) | 3/4 (0.70) | 3/4 (0.70) | 3/4 (0.70) | 7/8 (0.80) | yd (m) |
| View B | 1 (0.95) | 1 1/8 (1.05) | 1 1/8 (1.05) | 1 1/4 (1.15) | 1 1/4 (1.15) | yd (m) |
| Fabric 45" (115 cm) or 60" (152 cm) Wide | | | | | | |
| Skirt | 5/8 (0.60) | 3/4 (0.70) | 3/4 (0.70) | 7/8 (0.80) | 7/8 (0.80) | yd (m) |
| Swimwear Lining 27" (68 cm) Wide (Minimum Width) | | | | | | |
| View A & B | 1/2 (0.50) | 1/2 (0.50) | 1/2 (0.50) | 5/8 (0.60) | 5/8 (0.60) | yd (m) |
| Notions: Thread. View A: 3/8" (1 cm) wide swimwear elastic—3 yd (2.75 m) for sizes XS-S; 3 1/2 yd (3.20 m) for sizes M-L-XL. View B: 3/8" (1 cm) wide swimwear elastic—3 1/4 yd (3.00 m) for sizes XS-S; 4 yd (3.70 m) for sizes M-L-XL. Skirt: 1 yd (0.95 m) of 3/8" (1 cm) wide swimwear elastic. | | | | | | |